

# Tornado



By: Shaniece Johnson

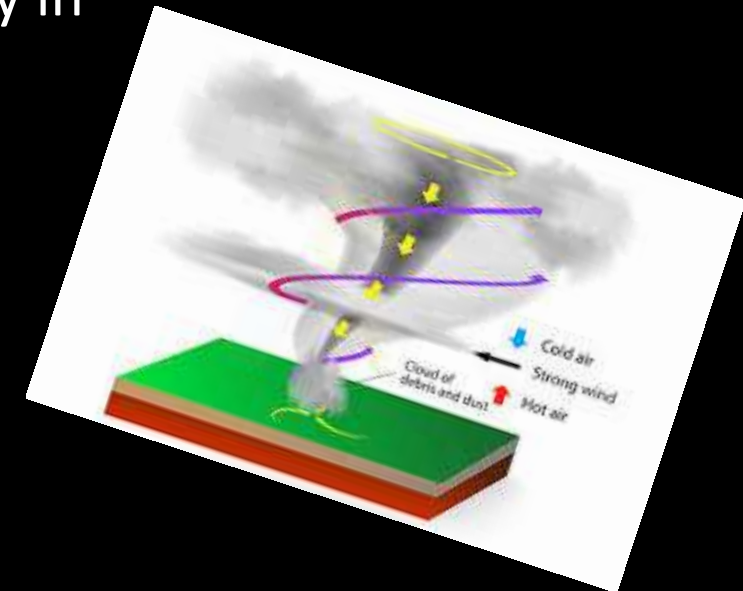
# WHAT IS A TORNADO?

A tornado is a narrow shaped, rotating column of air that extends from the top of a thunderstorm to the ground. Sometimes it's hard to see a tornado because wind is invisible unless it is made of water, dust, or debris.



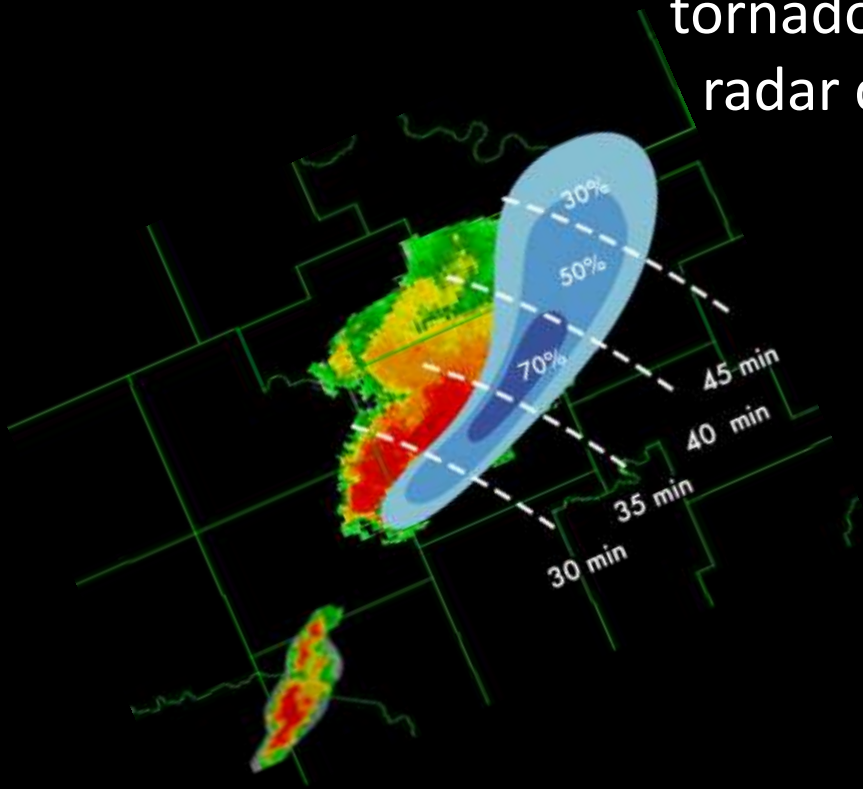
# THE CAUSE OF A TORNADO

Some tornadoes are caused by unstable air. Most are caused by thunderstorms. When warm moist air that comes from the gulf of Mexico and cool, dry air from Canada meet it makes instability in the atmosphere.



# PREDICTION TOOLS

The main equipment used to predict tornadoes is the Doppler radar system. Doppler radar can measure wind velocity, direction of the wind inside the storm and the predicted rainfall.



# THE EFFECT OF A TORNADO

Impact of tornadoes. Like all natural disasters such as hurricanes, earthquakes, floods and others, they end up with massive destruction to homes, property, infrastructure and cause many deaths as well. Each year, about 60 people are killed by tornadoes



## **MOSTLY OCCUR**

More than 500 tornadoes occur in this area and it is known as "Tornado Alley". Texas, Oklahoma, Kansas, Nebraska, South Dakota, North Dakota, Iowa, Missouri, Arkansas and Louisiana are in Tornado Alley.

# PREPARE

To begin preparing, you should build an emergency kit and communications plan with your family. Listen to a NOAA Weather Radio or to commercial radio or television newscasts for the latest information.

## **STRENGTH/IMPACT MEASURE**

The Fujita scale, or Fujita–Pearson scale is a scale for rating tornado intensity, based primarily on the damage tornadoes inflict on human-built structures and vegetation. F6 is the highest category of tornado, with winds capable of 261-318 mph.



# SOURCES SLIDE:

- <http://www.weatherwizkids.com/>
- <http://www.weatherwizkids.com/weather-safety.htm>
- <http://stormdamagecenter.org/common-storm-types.php>
- <http://www.nationalgeographic.com/magazine/2012/09/extreme-weather-global-climate-change-effects/>